

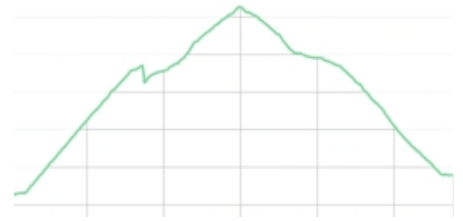
67 - Puerto de Bujaruelo

The Puerto de Bujaruelo is an old pass on the Spanish-French border. From France it can be reached by car but from Spain - despite the fact that in the Napoleonic times plans were made to also construct a road from Spain - the pass can only be reached by foot. The pass itself is not that interesting, but when we are enjoying the fantastic views from the trail in the Gorge of Lazaposa, we realize that is actually better that road never got constructed. This area close to the national park Valle de Ordesa y Monte Perdido is popular but less crowded than the national park itself.

- From where we parked the car (1) walk past the camping and cross the Roman bridge (2) over the river Ara.
- Continue straight on for a short stretch and next at the junction turn right (3), signposted with "Puerto de Bujaruelo / GR-10 / Francia".
- We now follow this trail all the time. At about 1,620 metres we get past a junction (4) with on the left a narrow trail and on the right a signpost with "Puerto de Bujaruelo". Thus we turn right here and follow the trail that is marked red-white.
- We now climb quite some time through the gorgeous Barranco de Lazaposa and reach a refuge (Cabaña de Eléctricas) (5). Make sure to continue on the left side of the water.
- Through this trail we eventually reach the Puerto de Bujaruelo (6).
- The way back is via the same route.

Fact Sheet

Duration: 4:30 hrs.
 Distance: 11.5 km.
 Route type: Round trip
 Path type: Mountain trails
 Marking: White-red, milestones
 Total difference in altitude: 995 m.
 Highest point: 2,273 m.
 Difficulty: Medium (4/15)



How to get there?

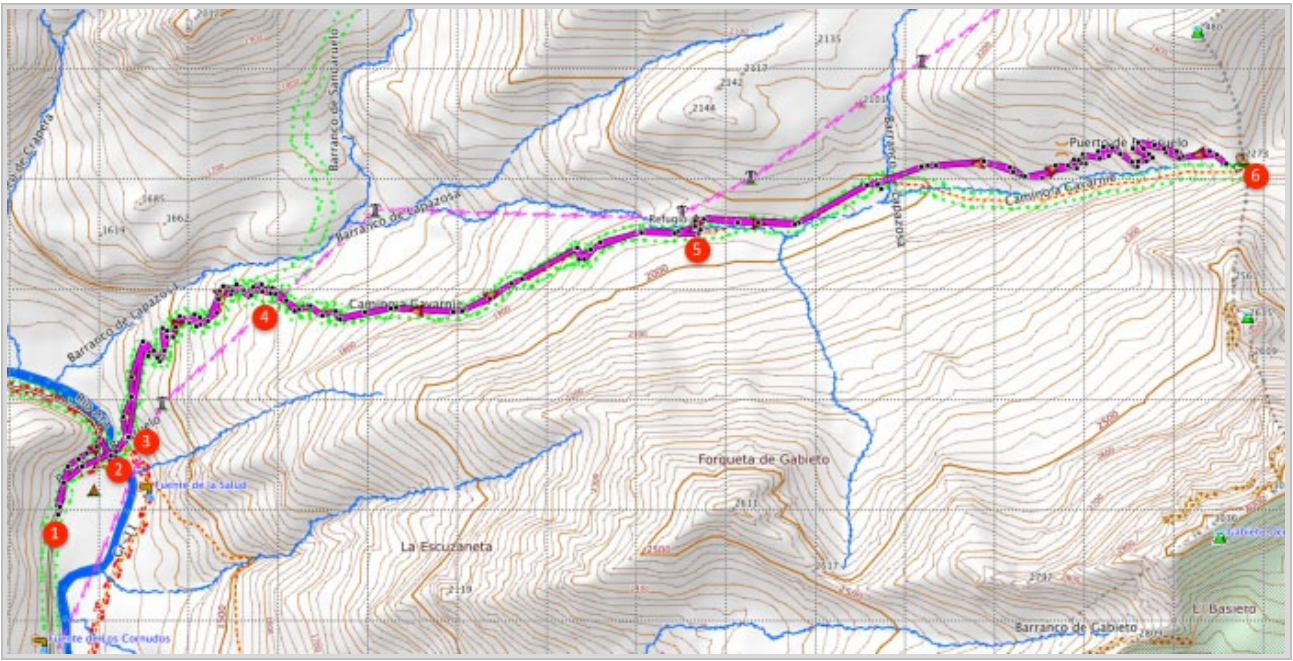
Bujaruelo can be reached from Torla. To get to Torla follow the N-260 until about km. 481 and then take the clearly indicated junction to Torla. Next drive through Torla, through the small tunnel. Further on we get at a junction where on the right is the entrance of the national park. Turn left here though, towards Bujaruelo. Now follow this road until the end and park the car next to the campsite of Bujaruelo.



GPS Coordinates:

Latitude: N 42 41.608

Longitude: W 0 06.493



© Ibereffect S.L. All rights reserved.