

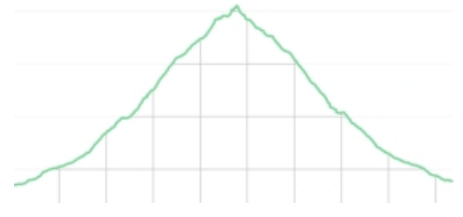
## 118 - Peña Carazo

Peña Carazo is with its just 2,000 metres of altitude about 500 meters lower than the highest peaks of Fuentes Carrionas, but the nice thing about this summit is that it is situated in the middle of the Nature Park of Fuentes Carrionas y Fuente Cobre-Montaña Palentina. The hike to this peak is a relatively easy walk. Here we are surrounded by the beautiful scenery of the Fuentes Carrionas and we do not have to look far to see the high peaks such as the Curavacas and Peña Prieta. On the way back to the Abbey of Lebanza during a large part of the route we have a wide view over the valley of Lebanza.

- Just before the end of the road lies a dirt road on the right (1), which we enter and where we go through a gate.
- Quickly we cross a small wooden bridge (2) over the stream Arroyo de la Abadía, where the path turns right. A bit further on the path turns with a sharp bend back to the left (3).
- Through this path we climb about 100 metres and we reach a meadow with stones which we cross straight on. On the other side of the meadow, we can see tyre marks, towards which we walk. We now see the Peña Carazo lying at our right hand.
- We cross the entire meadow and follow the tyre marks of the cars that sometimes drive here. When we arrive at the highest point of this meadow, we turn right (5), where we find a path that crosses the Arroyo de la Abadía.
- This path we follow in the direction of the pass that lies between the peaks of Peña Hontanillas and Carazo, and which we see right in front of us. The path is not always clearly visible, but by keeping the pass as our direction, the orientation is not really a problem. We can also see a sporadic milestone here.
- On this pass (7), where we have a nice view over the higher parts of the Fuentes Carrionas, we go through the fence and follow the path to the right, parallel to the fence, that goes uphill towards the Peña Carazo.
- After a short climb from the pass we reach a rocky ridge (8), from where there are multiple paths towards the Peña Carazo. It is a beautiful and nice route to keep right and walk along the ridge, but it is a bit heavier than the alternative to the left, down along the ridge. In the latter case, you do not start to ascend before you are right under the slope of the Peña Carazo. It happens to be that the peak is further away than you might initially think, and if you go straight onto the ridge, you will have a relatively long stretch of ascending and descending before you reach the Peña Carazo.
- From the Peña Carazo (9) we walk back below the crest and continue the same route back to the pass (7) and the Abadía Lebanza (1). To find the trail that crosses the Arroyo de la Abadía (6) you have to pay attention, because it lies somewhat hidden behind the bushes.

### Fact Sheet

Duration: 3:45 hrs.  
 Distance: 9.4 km.  
 Route type: Round trip  
 Path type: Forest and mountain trails  
 Marking: Milestones (partially)  
 Total difference in altitude: 691 m.  
 Highest point: 2,013 m.  
 Difficulty: Medium (4/15)



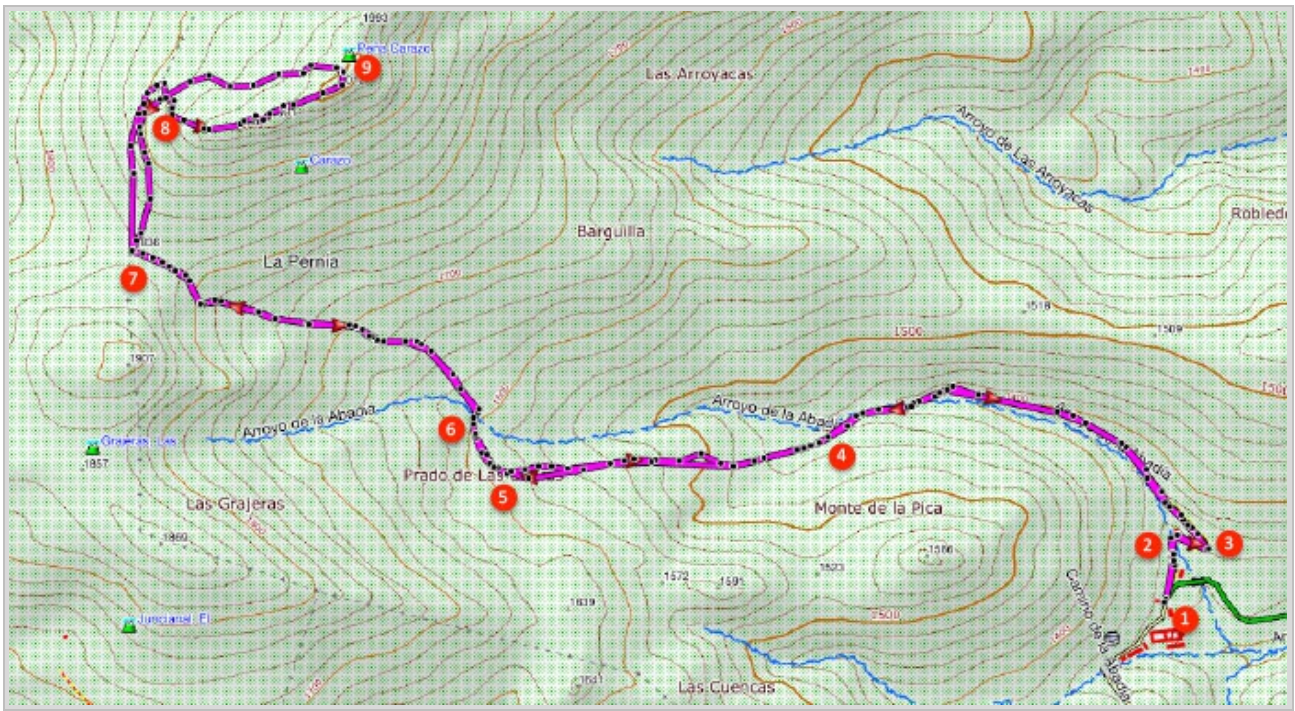
### How to get there?

The hike starts from Vidrieros, which from Palencia can be reached via the A-67 and then exit 80 to the P-227 towards Cervera de Pisuerga. Follow this road for more than 30 kilometres until the end and follow the last stretch of the CL-626 towards Cervera. Once through Cervera follow the CL-627 in the direction Potes for nearly 15 kilometers until San Salvador de Cantamuda. There turn left at the PP-2114 in the direction Lebanza and drive up this road all the way to the Abadía Lebanza and park the car somewhere near it.



### GPS Coordinates:

Latitude: N 42 57.808  
 Longitude: W 4 33.193



© Ibereffect S.L. All rights reserved.